

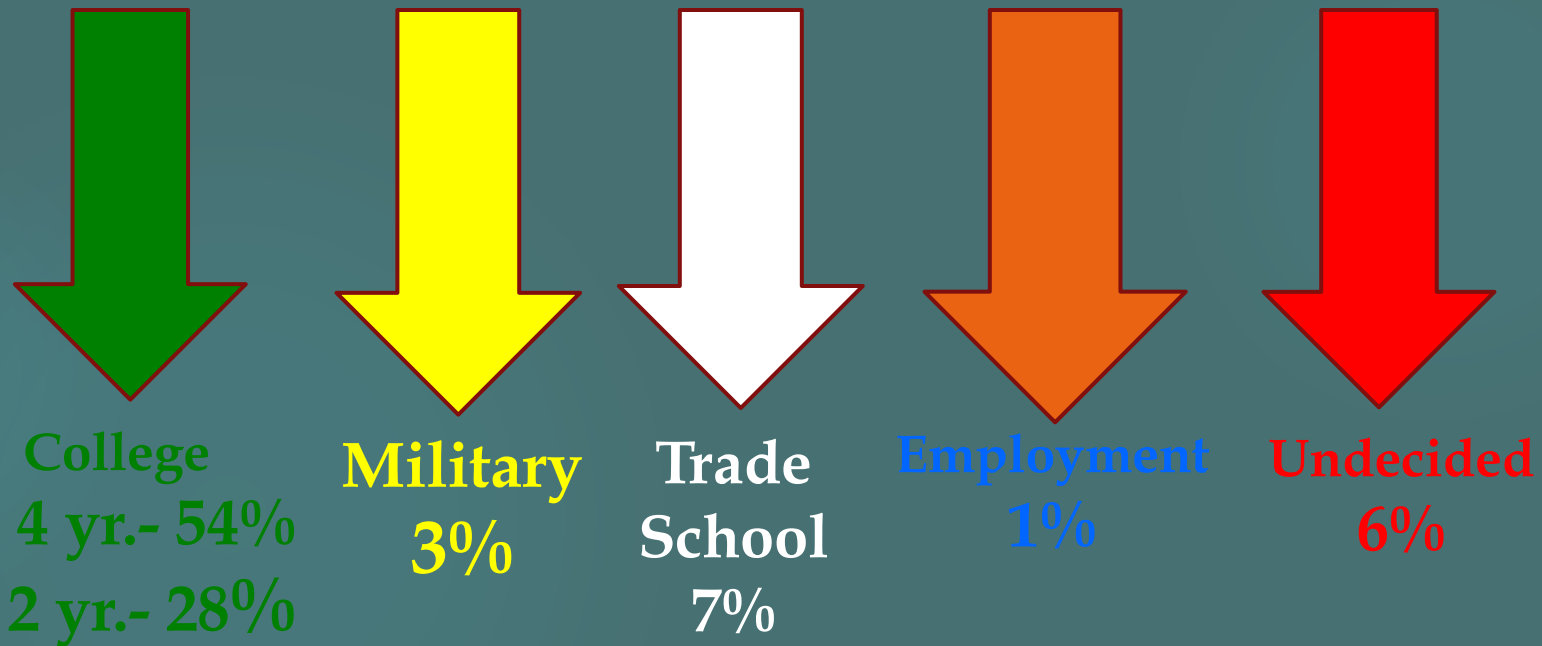
# COLLEGE PLANNING

IT IS A PROCESS and NEEDS A PLAN



# Where are our graduates now?

## KRHS CLASS OF 2020



94 % of our students attend college/trade school

# THINK ABOUT LONG RANGE PLANS

STUDENTS SHOULD  
EVALUATE THEIR:

- ▶ GOALS
- ▶ VALUES
- ▶ INTERESTS
- ▶ ABILITIES
- ▶ Match their ideas with a future that is right for them.



# CREATE AN INDIVIDUALIZED PLAN OF ACTION WHICH INCLUDES A SCHEDULE FOR ACCOMPLISHING YOUR GOALS

Parents and students should start the conversation now and make a plan together.



# PARENTS SHOULD:

- ▶ Share your ideas and communicate with your child.
- ▶ Discuss financial concerns.
- ▶ Listen to your child's wants, needs, and dreams.



# STUDENTS SHOULD:

- ▶ Study and get the best grades they can!
- ▶ Talk to their family, friends and school counselor about what they would like to do in the future.
- ▶ Talk to past Kittatinny graduates or students who are currently attending college.
- ▶ Talk to people who are already in a career they are interested in.

PARENTS & STUDENTS SHOULD FAMILIARIZE  
THEMSELVES WITH:



**WELCOME TO THE KRHS  
GUIDANCE WEBPAGE**



-



# DO YOUR HOMEWORK ON....

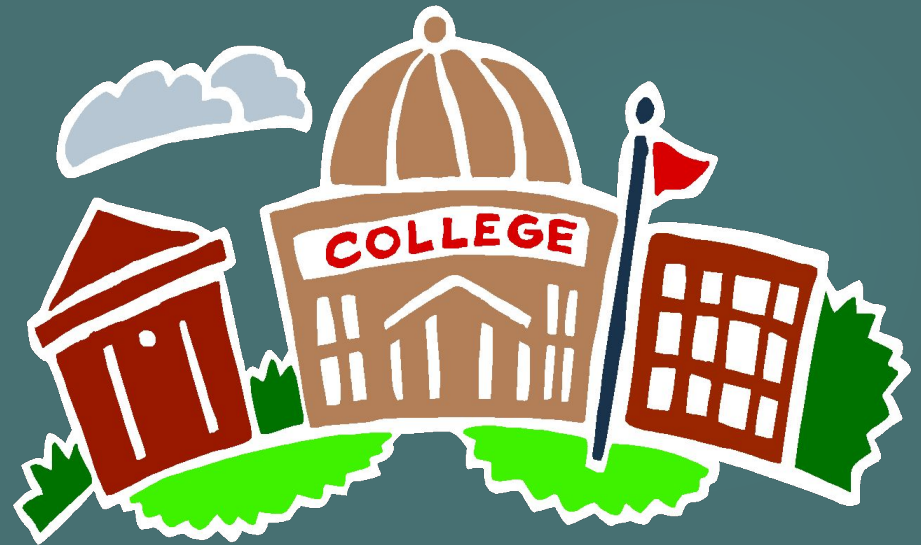
- ▶ Academics
- ▶ Geographic Location
- ▶ Setting
- ▶ Size
- ▶ Make up of Student Body
- ▶ Admissions Policy
- ▶ Safety/Security
- ▶ Campus Life
- ▶ Athletics
- ▶ Special Programs
- ▶ Services
- ▶ Housing
- ▶ And more...



**Keep notes on each school for future reference.**

# CLARIFY YOUR OPTIONS

- ▶ College vs. University
- ▶ Private vs. Public
- ▶ Service Academies
- ▶ Technical Institutes
- ▶ Career/Trade Schools
- ▶ Christian Colleges or Religious Based Institutions
- ▶ Two Year Colleges—Sussex County Community



# LIST OF COLLEGES

## STUDENTS SHOULD:

- ▶ Create a list of potential schools that they are interested in.
- ▶ As the year goes on, start narrowing down the list.
- ▶ By next September, refine the list to include 2-3 “reach” schools, 2-3 schools “on target” schools, and 1-2 “safety” schools.



# VISIT, VISIT, VISIT

## STUDENTS SHOULD:

- ▶ Attend college fairs and Kittatinny College Representative visits days.
- ▶ Take a summer course at a college.
- ▶ Attend college “Open House” days.
- ▶ Schedule an appointment with a college admissions office for an official visit.
- ▶ Stay over with a friend who attends a school they are interested in.



# College Visits @ KRHS



Kittatinny Regional High School  
September 20, 2021

## Scheduled College Visits

College	Representative	Location	Date
Stockton University	Ricky Amandeo	Kittatinny Guidance Office	9/20/21 2:15 PM
Monmouth University	Elizabeth Gensemer	Kittatinny Guidance Office	9/23/21 2:15 PM
Rensselaer Polytechnic Institute	Jennifer Yager	Kittatinny Guidance Office	9/29/21 2:15 PM
Lesley University	Melissa Essman	Kittatinny Guidance Office	9/30/21 2:15 PM
University of Scranton	Maria Ramos	Kittatinny Guidance Office	10/4/21 2:15 PM
Rowan University	Amanda Kuster	Kittatinny Guidance Office	10/5/21 2:15 PM
SUNY College at Oswego	Raymond Morris	Kittatinny Guidance Office	10/6/21 2:15 PM
Muhlenberg College	Muhlenberg College	Kittatinny Guidance Office	10/7/21 2:15 PM
Lafayette College	Jade Saybolt	Kittatinny Guidance Office	10/12/21 2:15 PM
University of Southern Maine	Julia Gurney	Kittatinny Guidance Office	10/13/21 2:15 PM
Caldwell University	Patrick Colligan	Kittatinny Guidance Office	10/14/21 2:15 PM
Berkeley College Woodland Park Location	Pat Verile	Kittatinny Guidance Office	10/18/21 2:15 PM
Georgian Court University	Scott Stratton	Kittatinny Guidance Office	10/20/21 2:15 PM
Ramapo College of New Jersey	Kelly Doran	Kittatinny Guidance Office	10/21/21 2:15 PM
Drew University	Zack Mower	Kittatinny Guidance Office	10/25/21 2:15 PM
Seton Hall University	Abigail Kaczmarek	Kittatinny Guidance Office	10/26/21 2:15 PM
Pennsylvania State University-Main Campus	Stacy Kovalycsik	Kittatinny Guidance Office	10/27/21 2:15 PM
William Paterson University of New Jersey	Melissa Zolla	Kittatinny Guidance Office	10/28/21 2:15 PM
Nova Southeastern University	Shanine Gilpin	Kittatinny Guidance Office	11/1/21 2:15 PM
Delaware Valley University	Megan Williams	Kittatinny Guidance Office	11/2/21 2:15 PM
Kean University	Kirsten Bowers	Kittatinny Guidance Office	11/3/21 2:15 PM
Paul Smiths College of Arts and Science	Hannah Ackerman	Kittatinny Guidance Office	11/8/21 2:15 PM
The University of Alabama	Judy Salmanson	Kittatinny Guidance Office	11/9/21 2:15 PM
Montclair State University	Vanessa Devericks	Kittatinny Guidance Office	11/10/21 2:15 PM
University College Dublin	Kendall Hook	Kittatinny Guidance Office	11/15/21 2:15 PM
Sacred Heart University	Alexandra Myers	Kittatinny Guidance Office	11/17/21 2:15 PM
Marywood University	Maria Temples	Kittatinny Guidance Office	11/18/21 2:15 PM
Western New England University	Rhianna Blake	Kittatinny Guidance Office	11/22/21 2:15 PM
State University of New York at New Paltz	Abigail Canniff	Kittatinny Guidance Office	11/23/21 2:15 PM
Bloomsburg University of Pennsylvania	Andy Wislock	Kittatinny Guidance Office	11/29/21 2:15 PM
Moravian University	Lauren Mann	Kittatinny Guidance Office	11/30/21 2:15 PM
Fairleigh Dickinson University-Metropolitan Campus	Katie Agyenim-Boateng	Kittatinny Guidance Office	12/1/21 2:15 PM
Wilkes University	Maureen Iskra	Kittatinny Guidance Office	12/6/21 2:15 PM
New Jersey Institute of Technology	Ronaisha Ruth	Kittatinny Guidance Office	12/7/21 2:15 PM

# WHAT COUNTS MOST...

- ▶ High School Course Load & Grades
- ▶ Class Rank and Grade Point Average
- ▶ Test Scores (SAT or ACT)
- ▶ Other Considerations
  - ▶ Essay or Writing Sample
  - ▶ High School Resume
  - ▶ Letters of Recommendation



ACCORDING TO THE NATIONAL ASSOCIATION FOR COLLEGE ADMISSION  
COUNSELING (NACAC)

# RESUME

## STUDENTS SHOULD:

- ▶ Create a resume which includes:
  - ▶ School and Personal Information
  - ▶ School and Community Activities
  - ▶ Honors and Awards
  - ▶ Work Experience
- ▶ Resume is a work in progress on student's Google drive.
- ▶ Email resume to Mrs. Fuchs (jryan@krhs.net) to be posted on Naviance account by September of Senior year.
- ▶ Student resumes may be sent along with college applications and potential scholarships.



# LETTERS OF RECOMMENDATION

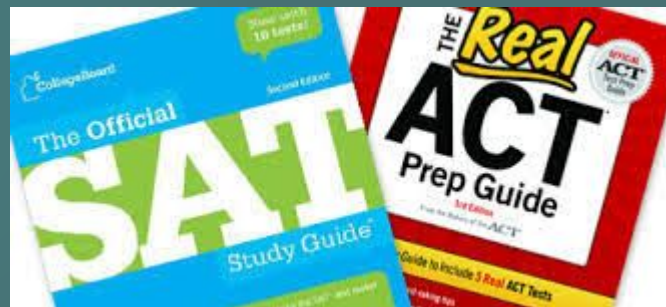
## STUDENTS SHOULD:

- ▶ Ask at least 2 academic teachers for letters of recommendation in the spring.
- ▶ Letters of recommendation from coaches, specialty areas and employers can also be included.
- ▶ Provide them with a copy of your resume.
- ▶ In addition to the asking verbally, an electronic request must be sent through Naviance.



# PREP FOR THE TEST

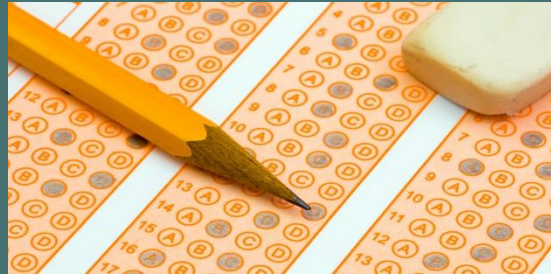
- ▶ STUDENTS SHOULD LOG ON TO [collegeboard.com](https://collegeboard.com):
  - ▶ Review their PSAT scores in December and create a plan for improvement on their Khan Academy account.
  - ▶ Utilize Collegeboard to access free SAT practice materials.
- ▶ Students should also take an SAT prep course and/or practice exams offered throughout the year.



# SIGN UP FOR THE SAT/ACT

- Counselors will review how to sign up for the SAT/ACT at our December junior group meeting.
- We recommend that juniors that plan on going to a 4 year college take the test at least 1-2 times during the winter/spring of their junior year, and 1-2 times during the fall of their senior year.
- It is the student's responsibility to sign up online at [www.collegeboard.com](http://www.collegeboard.com) or [www.actstudent.org](http://www.actstudent.org). Please ask for help if you need it.
  - Please be aware of deadlines.
  - Students must upload a headshot photo
  - Fee waivers are available to students receiving free or reduced lunch .

# OFFICIAL SAT/ACT SCORES



SAT SCORES ARE NOT LISTED ON THE HIGH SCHOOL TRANSCRIPT.

IT IS THE RESPONSIBILITY OF THE STUDENT TO HAVE THEIR SCORES SENT TO THE COLLEGES THAT THEY ARE INTERESTED IN.

\*STUDENTS ARE PROVIDED 4 FREE SCORES TO SEND WHEN THEY SIGN UP.

COST IS APPROXIMATELY \$12.00 PER SCORE REPORT FOR THE SAT AND \$15.00 PER SCORE REPORT FOR THE ACT.

GO TO [WWW.COLLEGEBOARD.COM](http://WWW.COLLEGEBOARD.COM) OR [WWW.ACT.ORG](http://WWW.ACT.ORG)

# SUSSEX COUNTY COMMUNITY COLLEGE



- ▶ Convenient location.
- ▶ Reasonable priced.
- ▶ Variety of majors and certifications.
- ▶ Everyone who applies is accepted. However, you must take a placement exam and may need to take remedial courses.
- ▶ No placement exam will be required students meet any of the following criteria:
  - ▶ A cumulative high school GPA of 3.0 or above
  - ▶ SAT - Scored a 450 in Critical Reading and/or 500 in Math
  - ▶ ACT - Scored a 23 in Math and/or a 23 in English
- ▶ Check out [www.sussex.edu](http://www.sussex.edu) for more information.

# NJ STARS PROGRAM



- ▶ Get a free education at our local community college by being in the top 15% of your class at the end of your Junior or Senior year.
- ▶ Maintain a 3.25 average or higher and be eligible for up to a \$1,250 per year NJ STARS II scholarship at any New Jersey public or independent NJ TAG-participating four-year college or university.
- ▶ Check out the Higher Education website at [www.hesaa.org](http://www.hesaa.org) or call 1-800-792-8670 for more information.

# POTENTIAL ATHLETES DIVISION I OR II



## STUDENTS SHOULD:

- ▶ See their counselor to make sure they are on track with course requirements for the NCAA Clearinghouse.
- ▶ Create a video highlight reel, letter of interest, resume, letter of recommendations from their coach, teachers and counselor, and a high school transcript.
- ▶ Send information out over the summer.
- ▶ Register with the clearing house and review all requirements @ [www.eligibilitycenter.org](http://www.eligibilitycenter.org).

FINANCIAL AID

IS A

PROCESS



# COLLEGE COSTS



Tuition & Fees



Transportation



Housing



Textbooks & Supplies

Meals

Personal Items



# CHANGES TO THE FAFSA

## (Free Application For Student Aid)

- ▶ The FAFSA will be available for applicants to fill out beginning on October 1<sup>st</sup> of their senior year.
- ▶ The FAFSA will request information from applicants' tax returns from 2 years prior.
- ▶ Students must also complete the NJ FAMS Application to be considered for New Jersey State-based Aid.

# FSA ID



- ▶ The FSA ID replaced the Federal Student Aid PIN.
- ▶ Confirms your identity when you access your financial aid information and electronically signs Federal Student Aid documents.
- ▶ Create at [fafsa.gov](https://fafsa.gov)
- ▶ Keep ID in a safe place as you will need it to apply every year that you are enrolled.

# DEFINITION OF NEED

College Budget (variable)  
(Cost of Attendance)

- EFC (constant)  
(Expected Family Contribution)

---

= NEED (variable)

# WHAT IS EXPECTED FAMILY CONTRIBUTION?

PARENT CONTRIBUTION  
( % of Assets & Income)

+

STUDENT CONTRIBUTION  
( % of Assets & Income)

=

EXPECTED FAMILY CONTRIBUTION



# FILE YOUR FINANCIAL AID FORMS

- ▶ FAFSA (October 1 or thereafter of your student's Senior year ).
- ▶ CSS PROFILE (October 1st or thereafter-if required).
- ▶ SCCC offers FAFSA help. They will work with you even if your child does not plan on attending SCCC.
- ▶ Meet all deadlines.
- ▶ Check for other financial aid forms from the specific colleges your child plans on attending.

# Role of the Financial Aid Office

- ▶ Determines final eligibility for need-based aid
- ▶ Puts together a personalized aid package
- ▶ Sends an award letter to you which details:
  - ▶ Costs
  - ▶ Expected Financial Contribution
  - ▶ Types of Aid and Amounts
  - ▶ Disbursement Procedure
  - ▶ Conditions of the Award



# Financial Aid Information



- ▶ Do not be afraid to reach out to the financial aid offices at SCCC and other colleges/universities
- ▶ Financial Aid Night is Thursday, October 14th at 7:00 PM in the Auditorium



THANK YOU FOR ATTENDING!

BEST OF LUCK IN THIS PROCESS!

PLEASE KEEP THE LINES OF COMMUNICATION OPEN.

DO NOT BE AFRAID TO ASK QUESTIONS.